

Embossed and Cut Lift Me Up

Stamp Set: Lift Me Up

Ink: Night of Navy, Balmy Blue, Pool Party, Blushing Bride

Paper: Night of Navy, Whisper White, Tranquil Textures DSP

Accessories: Big Shot, Up & Away Thinlits Dies, Big Shot Embossing Mats, sponge, scallop circle template, Stamparatus, enamel dots, pencil with eraser, ruler, post-it-notes

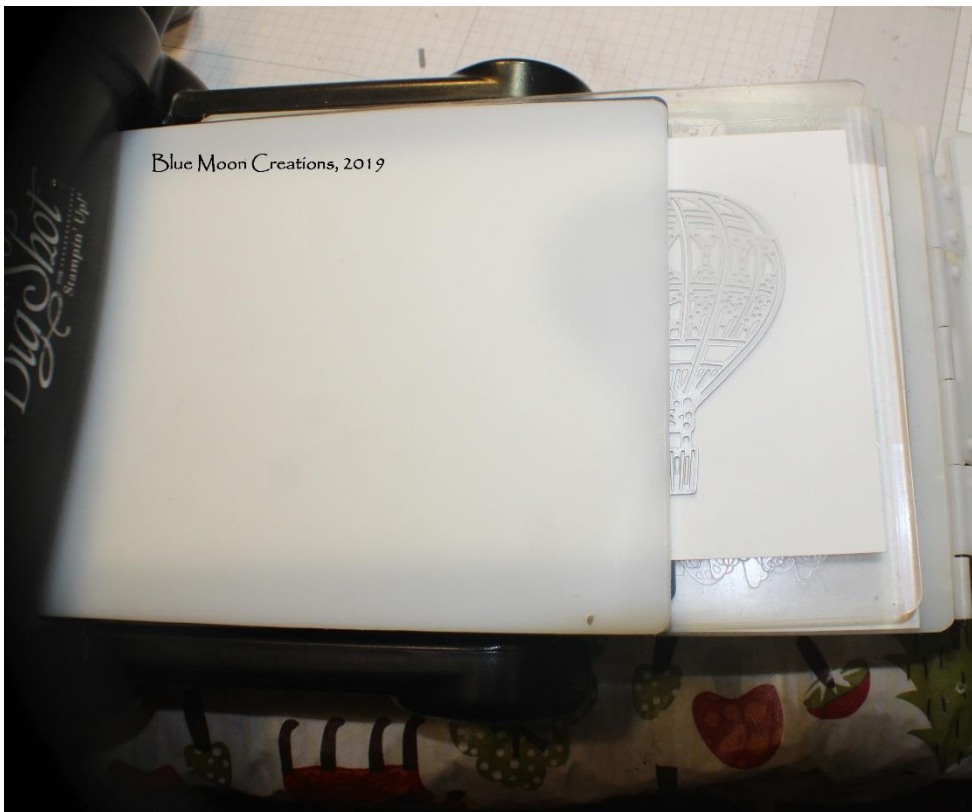
1. Start with a piece of Whisper White card stock measuring 11" x 8 1/2". Score in half at 5 1/2". Trim off the bottom to measure 5". Place in paper trimmer, and line up the score line at the 3 1/2" mark. Cut off the end.
2. With a pencil, mark the front at the top and the bottom at 2 3/4". Lightly draw a line using a pencil. This mark will be where you line up the middle of the balloon thinlit and the embossing and or cutting pads.



3. Place the card stock with the side that you want to emboss facing forward in the machine. Layer using the Embossing Mat sandwich: platform on tab 1, lower cutting plate, blue embossing mat, card stock, balloon thinlit with the cutting side down, and the upper white plate.

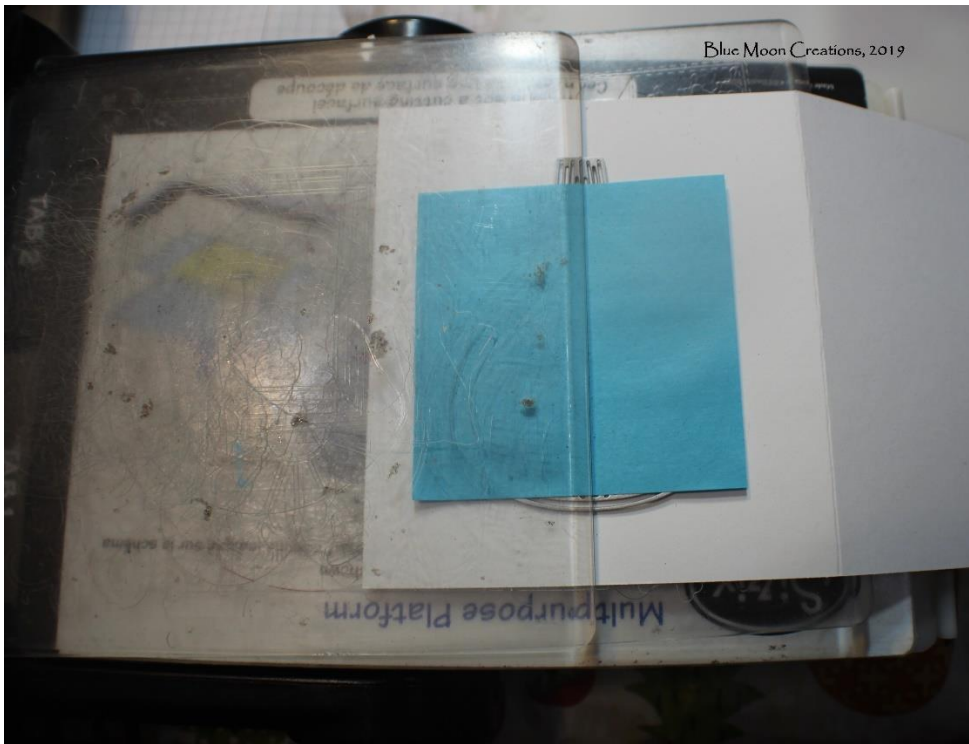
Place the thinlit so the center of the balloon is along the pencil line.

Tip: You may want to use a post-it-note so the thinlit does not shift.



4. So only this side of the card front is embossed, place the white cutting plate on the card stock and thinlit, lining up the edges of the plate on the pencil line.

Run through the Big Shot.



5. Carefully remove the card stock so the thinlit does not shift.

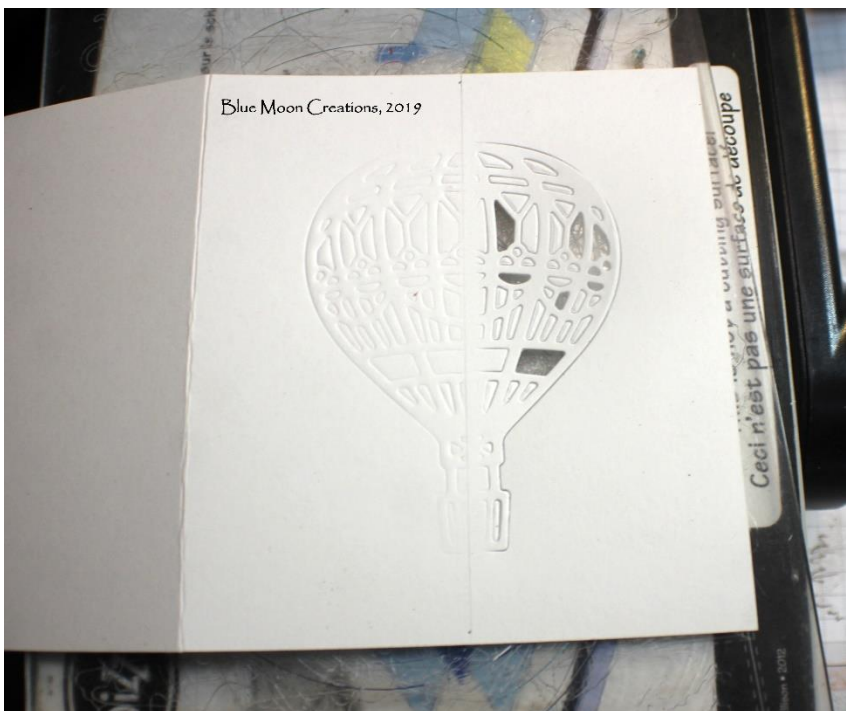
Place it on the 2nd Big Shot with the side that you want to cut facing forward in the machine.

Use the regular sandwich for cutting: platform on tab 2, lower cutting plate, card stock, thinlit, upper cutting plate.

So only this side of the card front is cut, place the upper cutting plate along the pencil line.

Run through the Big Shot.

TIP: You may want to use a post-it-note to keep the thinlit in place.



6. You will now have a piece that is partially cut and embossed.

Cut along the pencil line above and below the balloon, and remove the paper bits from the cut side with a paper piercing tool or Big Shot Brush.

7. Erase the pencil line.

8. To create clouds, place scallop circle template on side that is embossed. Sponge on Balmy Blue, Pool Party, Blushing Bride inks, moving the template as you go. Make it as light or dark as you want.

9. Stamp greeting using the Stamparatus and Night of Navy ink.

10. Optional: sponge Night of Navy ink along the edges of the cut side of the balloon.

11. Attach Tranquil Textures DSP to the inside. Attach to Night of Navy card base. Attach enamel dots to complete.

Measurements:

Night of Navy card base $3\frac{3}{4}$ " x $5\frac{1}{4}$ "

Whisper White card front: $7\frac{3}{4}$ " x 5"

Designer Series Paper: $3\frac{1}{4}$ " x $4\frac{3}{4}$ "